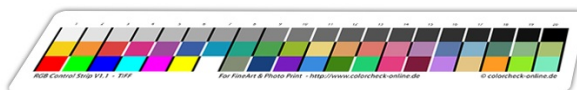


Analysis report RGB-control-strip

Printed by

Jan R. Smit
info@janrsmit.com

Jan R. Smit Fine Art Fotografie
www.janrsmit.com
T: JanRSmit
F: JanRSmit



Measurement

File: Colorcheck_1391855925
Date: 2014-02-08 11:38
Info: Paper-IFA69-Profile-IGFS-E4900-HDR-PK-PGPP-1440-20
Device: i1Pro

Workflow - WF221

Printer: Epson Stylus Pro 4900
Ink type: Ultrachrome HDR
Paper: IGFS
Charge no.: xxx
ICC profile: IGFS-E4900-HDR-PK-PGPP-1440-20140202-V01
Media type: PGPP
Settings: PGPP, Q

Digital FineArt 2010



PASSED

Colormangement			
Average ΔE_{00} :	0.68	High accuracy level	(Digital FineArt 2010)
Maximum ΔE_{00} :	1.32 (Field B3)		
Grey balance			
Color fault Δs :	1.09 (Field A14)	$\Delta s \leq 2$	(Digital FineArt 2010)
18% Grey / L*50:	49.9	$46 < L^*_{A10} < 54$	
Color tone:	Neutral	$\Delta C^*_{ab}: 1.3$	
Shadow details			
Minimum ΔL :	3.55	$\Delta L \Rightarrow 2$	(Digital FineArt 2010)
D_{max} :	2.39		
Paper characteristic	<input type="text"/>		
Paper white Lab*:	99.5 / -0.1 / -1.2	D50/2° (ISO 5631-3)	
OBA Content:	3.1 (Low)	Only correct for NON UV-cut measurement devices	
Gamut:	125 CCU	CCU = Cubic Colorcheck Units	

Colormangement

Average ΔE_{00} : **0.68**

High accuracy level



(Digital FineArt 2010)

Maximum ΔE_{00} : **1.32** (Field B3)

Field	Ref	Lab L*	Lab a*	Lab b*	Difference in Saturation ΔC^*	Difference in Hue ΔH^*	Color difference ΔE_{00}	$\Delta E_{00} \leq 6$
B1		85.0	2.3	78.8	-0.70	0.36	0.78	✓
B2		70.3	30.4	59.1	-0.80	0.08	0.85	✓
B3		52.1	58.7	34.8	-0.68	1.12	1.32	✓
B4		50.5	66.9	-7.9	0.02	0.80	0.92	✓
B5		44.9	42.4	-28.6	-0.06	0.42	0.43	✓
B6		39.4	6.3	-43.5	0.23	0.89	0.97	✓
B7		56.6	-23.6	-28.9	0.16	0.47	0.61	✓
B8		59.8	-40.2	3.6	0.07	0.25	0.32	✓
B9		59.9	-40.2	35.1	0.26	0.33	0.44	✓
B10		70.1	-25.5	61.2	0.09	0.18	0.23	✓
B11		85.5	-0.0	43.9	-0.36	0.02	0.48	✓
B12		69.9	20.1	39.9	-0.01	0.09	0.15	✓
B13		61.5	39.9	24.9	-0.04	0.00	0.44	✓
B14		61.6	40.3	-1.3	0.10	0.78	0.87	✓
B15		59.3	25.8	-19.7	0.67	0.62	1.09	✓
B16		49.1	-0.2	-31.7	0.73	0.13	1.16	✓
B17		69.7	-11.8	-19.7	0.58	0.75	0.96	✓
B18		50.2	-20.0	3.1	-0.04	0.60	0.64	✓
B19		69.7	-22.6	19.6	0.09	0.47	0.52	✓
B20		74.8	-17.7	37.7	0.33	0.21	0.43	✓

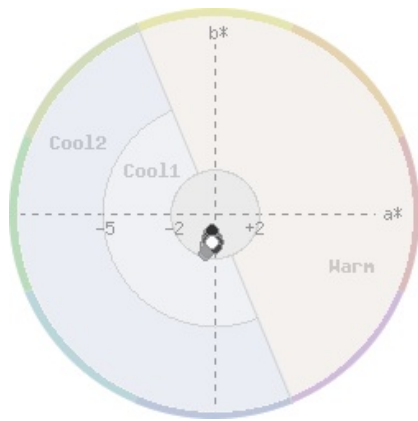
Grey balance 

Color fault Δs : **1.09** (Field A14) $\Delta s \leq 2$
 18% Grey / L*50: **49.9** $46 < L^*_{A10} < 54$
 Color tone: Neutral $\text{OC}^*_{ab}: 1.3$

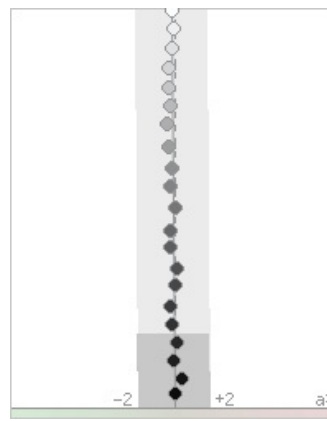


Shadow details 

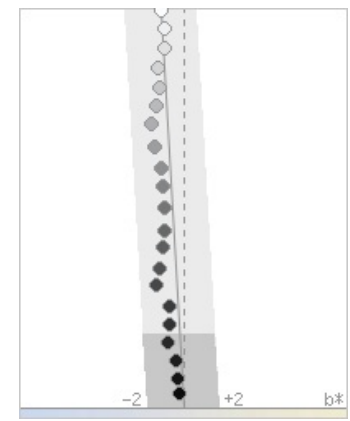
Minimum ΔL : **3.55** $\Delta L \Rightarrow 2$
 D_{max} : 2.39
 Minimum L*: 3.7



Field A1 - A16 / ab*-plot



a*-axis



b*-axis

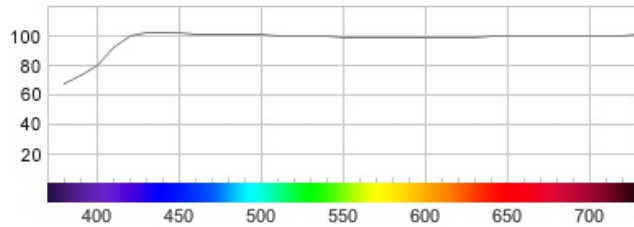
Field	Ref	Lab L*	Lab a*	Lab b*	Δs	$\Delta s \leq 2$
A1		94.8	-0.1	-1.1	0.14	✓
A2		89.8	-0.2	-1.1	0.10	✓
A3		84.9	-0.3	-1.4	0.40	✓
A4		80.1	-0.4	-1.3	0.44	✓
A5		75.6	-0.2	-1.5	0.59	✓
A6		71.1	-0.4	-1.8	0.98	✓
A7		65.2	-0.4	-1.6	0.84	✓
A8		60.1	-0.1	-1.3	0.51	✓
A9		55.2	-0.2	-1.1	0.48	✓
A10		49.9	0.1	-1.0	0.41	✓
A11		44.3	-0.2	-1.1	0.55	✓
A12		40.0	-0.2	-1.2	0.69	✓
A13		35.0	0.1	-1.3	0.88	✓
A14		30.6	0.0	-1.5	1.09	✓
A15		25.3	-0.2	-0.8	0.52	✓
A16		21.0	-0.1	-0.8	0.52	✓
Field	Ref	Lab L*	Lab a*	Lab b*	Difference in brightness ΔL compared to previous field	$\Delta L \geq 2$
A17		16.4	0.1	-0.8	4.58	✓
A18		11.6	-0.0	-0.4	4.79	✓
A19		7.2	0.4	-0.3	4.36	✓
A20		3.7	0.0	-0.2	3.55	✓

Paper characteristic

Paper white Lab*: 99.5 / -0.1 / -1.2 D50/2° (ISO 5631-3)

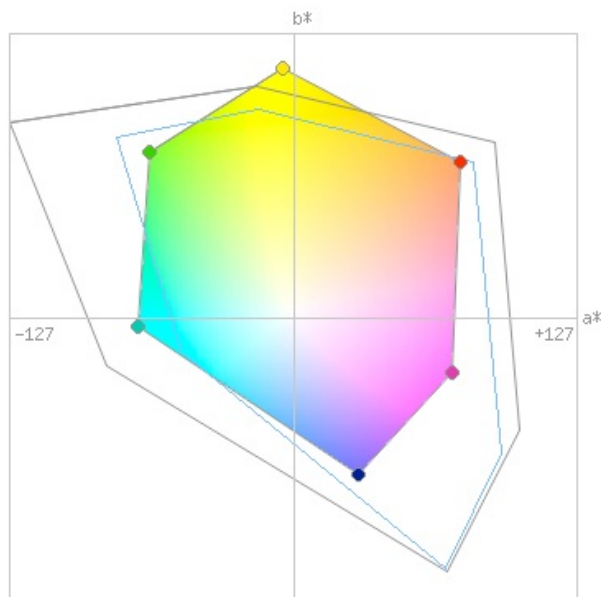
OBA Content: 3.1 (Low) Only correct for NON UV-cut measurement devices

CIE Whiteness: 103 D65/10° (ISO 11475)



Gamut

Size: 125 CCU CCU = Cubic Colorcheck Units



Compared to AdobeRGB (50%) sRGB (64%)

Field	Measured data			Reference			
	Lab L*	Lab a*	Lab b*	Lab L*	Lab a*	Lab b*	
A1	94.83	-0.09	-1.05		95.00	-0.10	-1.19
A2	89.77	-0.16	-1.06		90.00	-0.10	-1.13
A3	84.94	-0.32	-1.39		85.00	-0.09	-1.06
A4	80.09	-0.36	-1.35		80.00	-0.08	-1.00
A5	75.61	-0.21	-1.52		75.00	-0.08	-0.94
A6	71.11	-0.42	-1.79		70.00	-0.07	-0.88
A7	65.16	-0.36	-1.60		65.00	-0.07	-0.81
A8	60.08	-0.14	-1.26		60.00	-0.06	-0.75
A9	55.19	-0.20	-1.14		55.00	-0.06	-0.69
A10	49.92	0.05	-1.02		50.00	-0.05	-0.63
A11	44.32	-0.25	-1.07		45.00	-0.05	-0.56
A12	40.04	-0.24	-1.17		40.00	-0.04	-0.50
A13	34.97	0.14	-1.30		35.00	-0.04	-0.44
A14	30.59	0.00	-1.47		30.00	-0.03	-0.38
A15	25.26	-0.20	-0.81		25.00	-0.03	-0.31
A16	20.95	-0.13	-0.76		20.00	-0.02	-0.25
A17	16.38	0.13	-0.84		15.00	-0.02	-0.19
A18	11.59	-0.03	-0.37		10.00	-0.01	-0.13
A19	7.23	0.38	-0.31		5.00	-0.01	-0.06
A20	3.68	0.03	-0.22		0.00	-0.00	-0.00
B1	84.97	2.28	78.80		85.00	3.00	82.00
B2	70.33	30.39	59.15		70.00	32.00	62.00
B3	52.15	58.68	34.79		52.00	60.00	38.00
B4	50.47	66.90	-7.92		50.00	67.00	-6.00
B5	44.90	42.40	-28.56		45.00	43.00	-28.00
B6	39.41	6.26	-43.52		40.00	5.00	-43.00
B7	56.62	-23.61	-28.90		57.00	-24.00	-28.00
B8	59.78	-40.22	3.62		60.00	-40.00	4.00
B9	59.85	-40.21	35.10		60.00	-40.00	34.00
B10	70.13	-25.47	61.21		70.00	-25.00	61.00
B11	85.48	-0.02	43.93		85.00	0.00	45.00
B12	69.85	20.10	39.91		70.00	20.00	40.00
B13	61.49	39.89	24.93		62.00	40.00	25.00
B14	61.58	40.27	-1.26		62.00	40.00	0.00
B15	59.33	25.76	-19.75		60.00	25.00	-18.00
B16	49.06	-0.17	-31.75		50.00	0.00	-30.00
B17	69.74	-11.85	-19.66		70.00	-12.00	-18.00
B18	50.20	-20.03	3.14		50.00	-20.00	4.00
B19	69.72	-22.62	19.56		70.00	-22.00	20.00
B20	74.76	-17.70	37.72		75.00	-17.00	37.00

	Gamut Measured data							
Field	Lab L*	Lab a*	Lab b*			RGB R	RGB G	RGB B
C1	55.98	74.60	69.91			255	0	0
C2	74.82	-64.11	74.23			0	255	0
C3	18.39	28.93	-70.57			0	0	255
C4	71.39	-69.64	-3.89			0	255	255
C5	55.04	70.75	-25.04			255	0	255
C6	92.50	-4.50	111.43			255	255	0
C7	99.55	-0.11	-1.25			255	255	255
C8	64.41	-9.22	11.85			131	141	118
C9	32.04	-34.96	-44.27			23	64	125
C10	32.78	50.40	-54.76			119	28	191
C11	56.66	-51.85	-48.73			57	139	224
C12	57.34	-62.73	56.84			64	132	20
C13	68.97	-77.86	39.53			33	207	115
C14	55.49	81.78	-3.85			228	61	128
C15	39.44	70.50	6.21			126	26	59
C16	63.21	46.05	-32.41			190	128	232
C17	85.46	19.08	40.30			228	197	133
C18	71.61	52.42	102.00			255	154	35
C19	78.52	-50.69	88.67			147	235	39
C20	79.16	-66.38	14.31			123	235	190