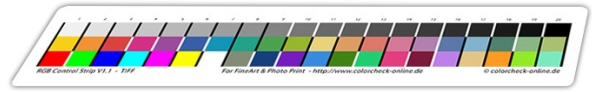


Analysis report RGB-control-strip

Printed by

Jan R. Smit
info@janrsmit.com

Jan R. Smit Fine Art Fotografie
www.janrsmit.com
T: JanRSmit
F: JanRSmit



Measurement

File: Colorcheck_1391855893
Date: 2014-02-08 11:38
Info: Paper-IGFS-Prof-IGFS-E4900-HDR-PK-P
GPP-1440-20140202-V01-M0-D50-PSA
Device: i1Pro

Workflow - WF221

Printer: Epson Stylus Pro 4900
Ink type: Ultrachrome HDR
Paper: IGFS
Charge no.: xxx
ICC profile: IGFS-E4900-HDR-PK-PGPP-1440-20140202-V01
Media type: PGPP
Settings: PGPP, Q

Digital FineArt 2010



PASSED

Colormangement			
Average ΔE_{00} :	1.11	High accuracy level	(Digital FineArt 2010)
Maximum ΔE_{00} :	1.63 (Field B16)		
Grey balance			
Color fault Δs :	1.66 (Field A14)	$\Delta s \leq 2$	(Digital FineArt 2010)
18% Grey / L*50:	48.7	$46 < L^*_{A10} < 54$	
Color tone:	Neutral	$\text{Ø}C^*_{ab}: 1.1$	
Shadow details			
Minimum ΔL :	3.69	$\Delta L \Rightarrow 2$	(Digital FineArt 2010)
D_{max} :	2.41		
Paper characteristic	<input type="text"/>		
Paper white Lab*:	99.8 / -0.3 / -0.8	D50/2° (ISO 5631-3)	
OBA Content:	1.7 (Very low)	Only correct for NON UV-cut measurement devices	
Gamut:	126 CCU	CCU = Cubic Colorcheck Units	

Colormangement

Average ΔE_{00} :**1.11**

High accuracy level



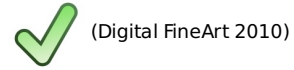
(Digital FineArt 2010)

Maximum ΔE_{00} :**1.63** (Field B16)

Field	Ref	Lab L*	Lab a*	Lab b*	Difference in Saturation ΔC^*	Difference in Hue ΔH^*	Color difference ΔE_{00}	$\Delta E_{00} \leq 6$
B1		84.4	2.7	77.5	-0.97	0.10	1.06	✓
B2		69.3	31.5	57.8	-0.98	0.94	1.47	✓
B3		51.5	58.4	35.7	-0.61	0.61	1.01	✓
B4		50.0	66.2	-7.2	-0.18	0.54	0.57	✓
B5		44.0	41.3	-28.2	-0.39	0.61	1.16	✓
B6		38.3	5.6	-43.9	0.34	0.34	1.51	✓
B7		55.4	-24.1	-28.9	0.27	0.29	1.51	✓
B8		58.8	-40.0	3.4	-0.01	0.38	1.15	✓
B9		58.9	-39.8	33.0	-0.22	0.31	1.02	✓
B10		69.4	-25.2	58.5	-0.56	0.61	0.97	✓
B11		85.2	0.3	42.2	-0.93	0.23	0.97	✓
B12		69.2	20.3	38.8	-0.30	0.60	0.89	✓
B13		61.0	39.6	24.3	-0.22	0.27	0.90	✓
B14		61.1	39.9	-1.2	-0.04	0.78	1.08	✓
B15		58.8	25.3	-19.1	0.34	0.46	1.19	✓
B16		48.5	-0.4	-31.4	0.58	0.32	1.63	✓
B17		69.0	-12.1	-19.5	0.59	0.55	1.12	✓
B18		49.3	-20.1	3.2	0.01	0.61	0.92	✓
B19		68.9	-22.5	18.9	-0.15	0.73	1.16	✓
B20		74.0	-17.4	36.2	-0.18	0.46	0.86	✓

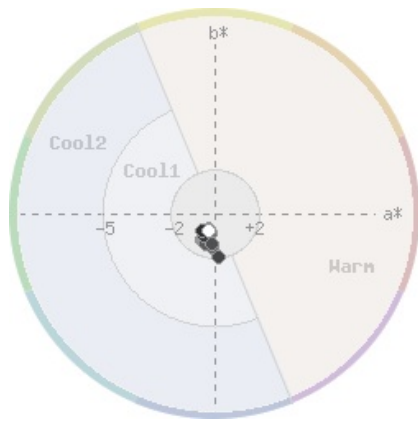
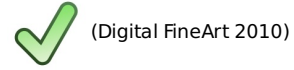
Grey balance 

Color fault Δs : **1.66** (Field A14) $\Delta s \leq 2$
 18% Grey / L*50: **48.7** $46 < L^*_{A10} < 54$
 Color tone: Neutral $\varnothing C^*_{ab}: 1.1$

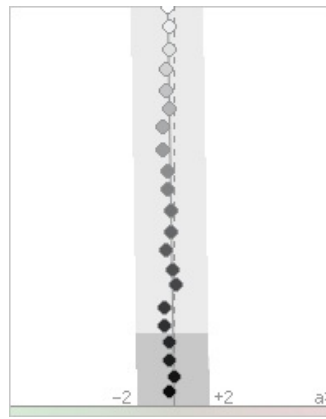


Shadow details 

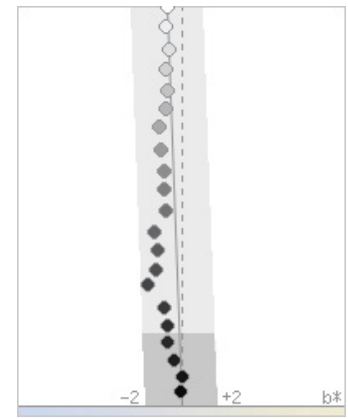
Minimum ΔL : **3.69** $\Delta L \Rightarrow 2$
 D_{max} : 2.41
 Minimum L*: 3.6



Field A1 - A16 / ab*-plot



a*-axis



b*-axis

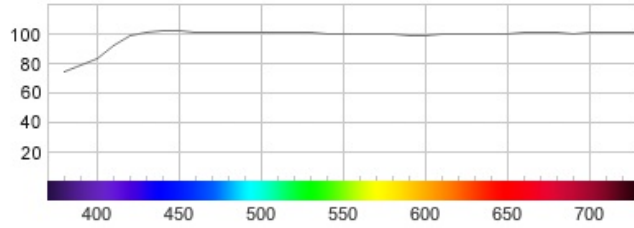
Field	Ref	Lab L*	Lab a*	Lab b*	Δs	$\Delta s \leq 2$
A1		94.7	-0.2	-0.9	0.15	✓
A2		89.2	-0.3	-0.7	0.01	✓
A3		84.1	-0.4	-0.9	0.26	✓
A4		78.9	-0.4	-0.8	0.22	✓
A5		74.2	-0.3	-0.9	0.30	✓
A6		69.7	-0.5	-1.2	0.75	✓
A7		63.9	-0.5	-1.1	0.75	✓
A8		58.8	-0.3	-0.9	0.50	✓
A9		53.9	-0.3	-1.0	0.57	✓
A10		48.7	-0.1	-0.9	0.52	✓
A11		43.5	-0.1	-1.5	1.12	✓
A12		38.8	-0.4	-1.3	1.04	✓
A13		34.0	-0.1	-1.4	1.10	✓
A14		30.0	0.2	-1.9	1.66	✓
A15		24.6	-0.5	-1.0	0.86	✓
A16		20.1	-0.5	-0.7	0.74	✓
Field	Ref	Lab L*	Lab a*	Lab b*	Difference in brightness ΔL compared to previous field	$\Delta L \geq 2$
A17		16.0	-0.3	-0.8	4.13	✓
A18		11.3	-0.2	-0.4	4.67	✓
A19		7.2	0.1	0.1	4.07	✓
A20		3.6	-0.2	-0.0	3.69	✓

Paper characteristic

Paper white Lab*: 99.8 / -0.3 / -0.8 D50/2° (ISO 5631-3)

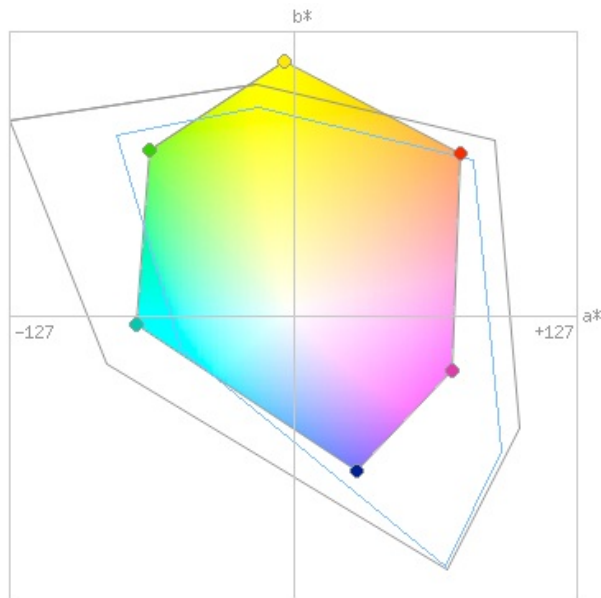
OBA Content: 1.7 (Very low) Only correct for NON UV-cut measurement devices

CIE Whiteness: 102 D65/10° (ISO 11475)



Gamut

Size: 126 CCU CCU = Cubic Colorcheck Units



Compared to AdobeRGB (50%) sRGB (65%)

Field	Measured data			Reference			
	Lab L*	Lab a*	Lab b*	Lab L*	Lab a*	Lab b*	
A1	94.73	-0.20	-0.86		95.00	-0.26	-0.72
A2	89.25	-0.25	-0.69		90.00	-0.24	-0.68
A3	84.15	-0.37	-0.86		85.00	-0.23	-0.64
A4	78.94	-0.38	-0.75		80.00	-0.22	-0.61
A5	74.25	-0.27	-0.86		75.00	-0.20	-0.57
A6	69.74	-0.54	-1.19		70.00	-0.19	-0.53
A7	63.91	-0.54	-1.14		65.00	-0.18	-0.49
A8	58.84	-0.30	-0.94		60.00	-0.16	-0.45
A9	53.92	-0.33	-0.95		55.00	-0.15	-0.42
A10	48.66	-0.15	-0.89		50.00	-0.14	-0.38
A11	43.45	-0.13	-1.46		45.00	-0.12	-0.34
A12	38.84	-0.40	-1.30		40.00	-0.11	-0.30
A13	34.00	-0.09	-1.36		35.00	-0.09	-0.26
A14	30.04	0.16	-1.87		30.00	-0.08	-0.23
A15	24.59	-0.45	-0.96		25.00	-0.07	-0.19
A16	20.11	-0.52	-0.73		20.00	-0.05	-0.15
A17	15.98	-0.25	-0.75		15.00	-0.04	-0.11
A18	11.31	-0.22	-0.45		10.00	-0.03	-0.08
A19	7.24	0.08	0.05		5.00	-0.01	-0.04
A20	3.55	-0.25	-0.02		0.00	-0.00	-0.00
B1	84.38	2.66	77.54		85.00	3.00	82.00
B2	69.27	31.48	57.77		70.00	32.00	62.00
B3	51.46	58.44	35.73		52.00	60.00	38.00
B4	50.02	66.17	-7.22		50.00	67.00	-6.00
B5	44.04	41.29	-28.25		45.00	43.00	-28.00
B6	38.31	5.57	-43.94		40.00	5.00	-43.00
B7	55.43	-24.05	-28.91		57.00	-24.00	-28.00
B8	58.78	-40.03	3.38		60.00	-40.00	4.00
B9	58.94	-39.84	33.02		60.00	-40.00	34.00
B10	69.36	-25.23	58.53		70.00	-25.00	61.00
B11	85.22	0.31	42.25		85.00	0.00	45.00
B12	69.24	20.34	38.81		70.00	20.00	40.00
B13	61.03	39.63	24.28		62.00	40.00	25.00
B14	61.14	39.87	-1.25		62.00	40.00	0.00
B15	58.82	25.26	-19.07		60.00	25.00	-18.00
B16	48.47	-0.42	-31.39		50.00	0.00	-30.00
B17	69.00	-12.07	-19.50		70.00	-12.00	-18.00
B18	49.31	-20.10	3.15		50.00	-20.00	4.00
B19	68.86	-22.46	18.86		70.00	-22.00	20.00
B20	74.04	-17.44	36.22		75.00	-17.00	37.00

Field	Gamut Measured data							
	Lab L*	Lab a*	Lab b*			RGB R	RGB G	RGB B
C1	55.81	75.02	72.75			255	0	0
C2	74.49	-64.71	73.97			0	255	0
C3	17.91	28.47	-69.60			0	0	255
C4	70.78	-70.70	-3.83			0	255	255
C5	54.93	70.76	-24.42			255	0	255
C6	92.58	-4.23	113.50			255	255	0
C7	99.84	-0.27	-0.76			255	255	255
C8	63.16	-9.23	11.73			131	141	118
C9	31.16	-31.16	-46.33			23	64	125
C10	32.63	49.25	-54.33			119	28	191
C11	56.21	-51.30	-48.93			57	139	224
C12	56.77	-62.55	55.54			64	132	20
C13	68.73	-77.74	37.32			33	207	115
C14	55.66	81.46	-3.30			228	61	128
C15	39.42	70.26	6.80			126	26	59
C16	63.12	46.14	-32.05			190	128	232
C17	85.44	19.38	39.49			228	197	133
C18	71.68	52.85	101.84			255	154	35
C19	78.40	-51.19	87.78			147	235	39
C20	78.96	-67.20	14.71			123	235	190